

ZARHA | 4 urban townhomes

1705 33RD AVENUE S.W.

STANDARD FEATURES

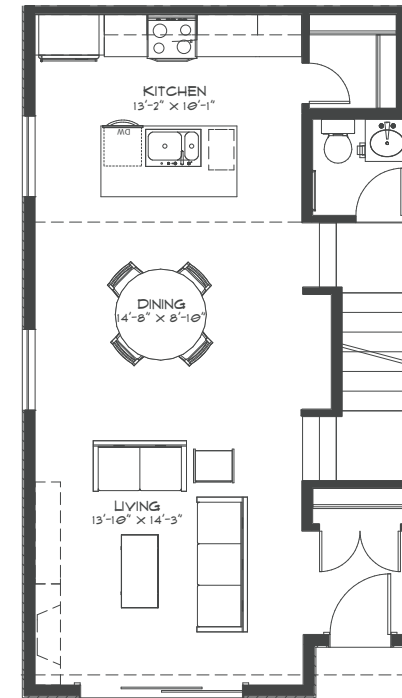
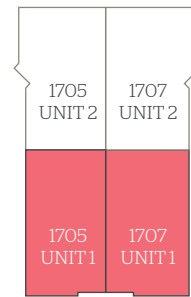
- Smart Thermostat
- Built-in Master Closet
- Soft Close Cabinetry
- Quartz Countertops
- Modern Stainless Steel Appliances
- Gas Range Cook Top
- Kohler Fixtures Throughout
- Mindfully Placed Skylight
- Thoughtful Floor Plans
- Energy Efficient Exterior Cladding
- Triple Glazed Windows
- Steam Washer Dryer
- 8ft Entry Door
- Energuide Rating of 80+
- Bike Score 93
- Walk Score 78



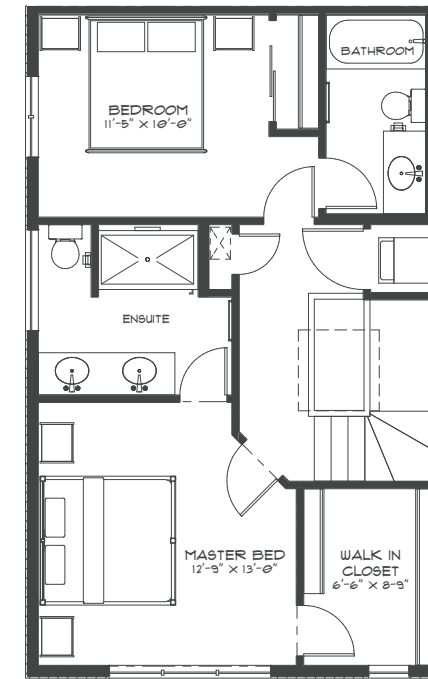
*Photos and renderings are for visualization purposes only and may not be exactly as shown. Prices & specifications are subject to change

FRONT UNIT FLOOR PLAN

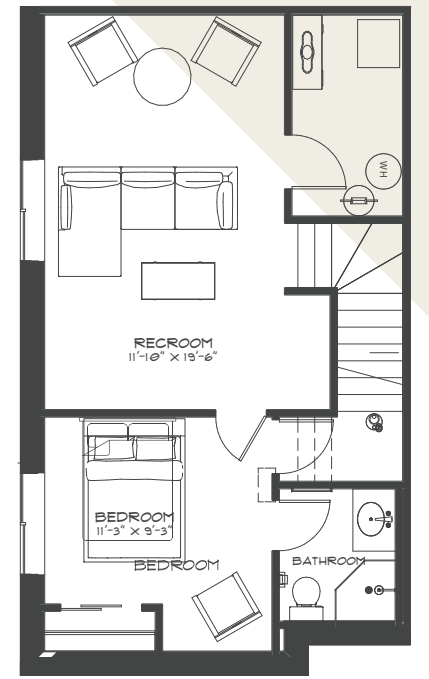
1705, 1707 (reverse plan)
 3 bedroom, 3½ bathroom
1958 developed sqft (1705)
1943 developed sqft (1707)



MAIN LEVEL



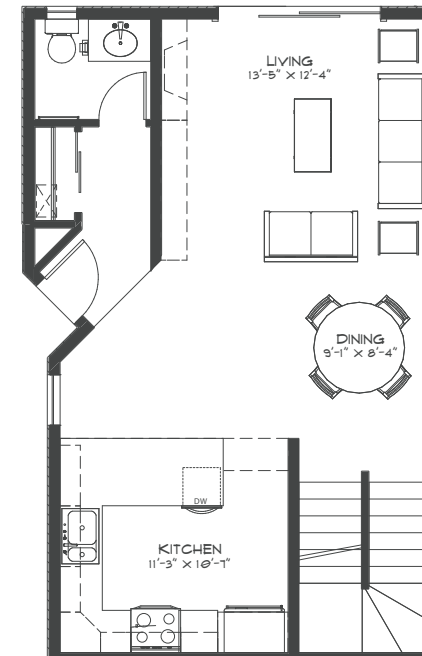
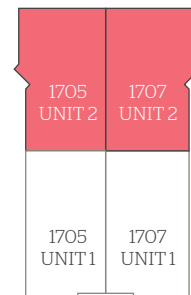
UPPER LEVEL



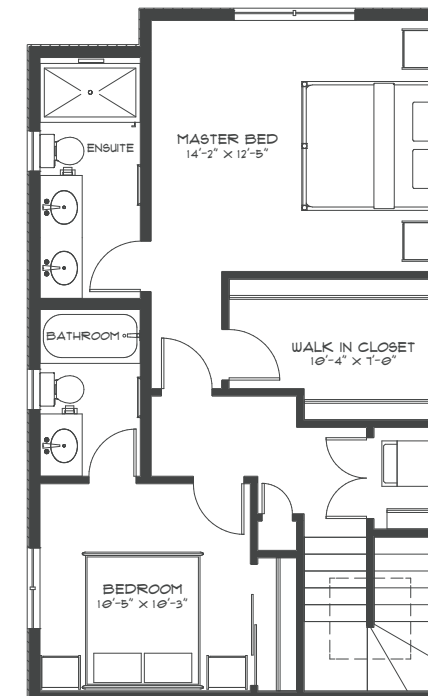
LOWER LEVEL

REAR UNIT FLOOR PLAN

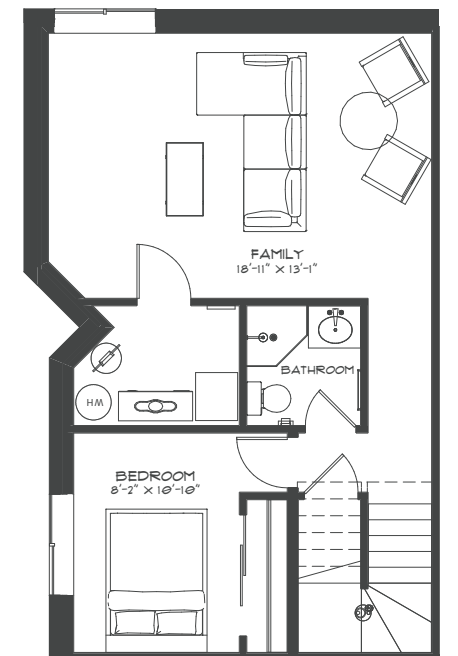
1705, 1707 (reverse plan)
 3 bedroom, 3½ bathroom
1967 developed sqft



MAIN LEVEL



UPPER LEVEL



LOWER LEVEL