

BRISA | 4 urbantowns

1740 WEST MOUNT ROAD N.W.

► STANDARD FEATURES

- Smart Thermostat
- Built-in Master Closet
- Soft Close Cabinetry
- Quartz Countertops
- Modern Stainless Steel Appliances
- Gas Range Cook Top
- Kohler Fixtures Throughout
- Mindfully Placed Skylight
- Thoughtful Floor Plans
- Energy Efficient Exterior Cladding
- Triple Glazed Windows
- Steam Washer Dryer
- 8ft Entry Door
- Energuide Rating of 80+
- Bike Score 97
- Walk Score 67

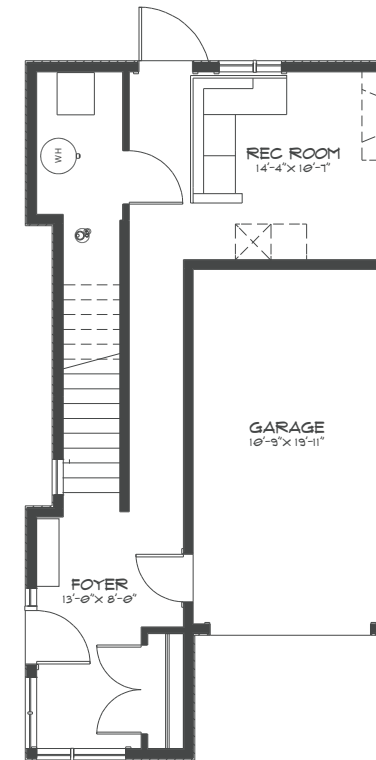
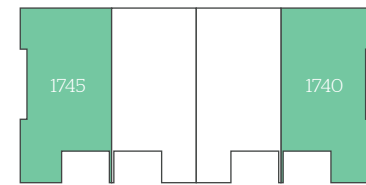


*Photos and renderings are for visualization purposes only and may not be exactly as shown. Drawings and details are subject to change

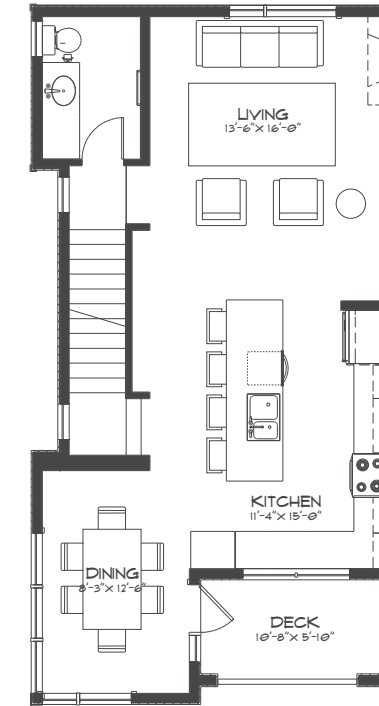
► CORNER UNIT FLOOR PLAN

1745, 1740 (reverse plan)

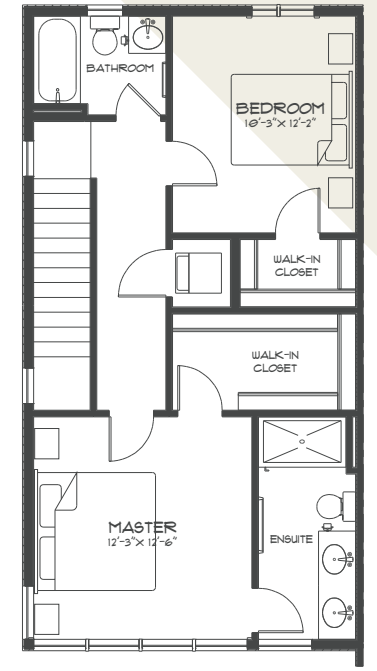
2 bedroom, 2½ bathroom
1782 developed sqft



LOWER LEVEL



MAIN LEVEL

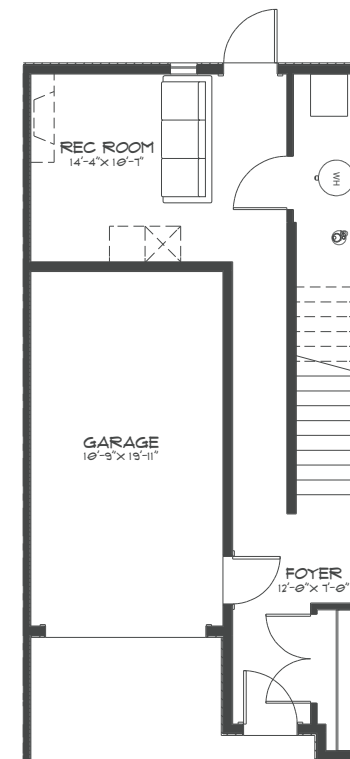
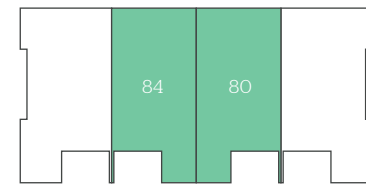


UPPER LEVEL

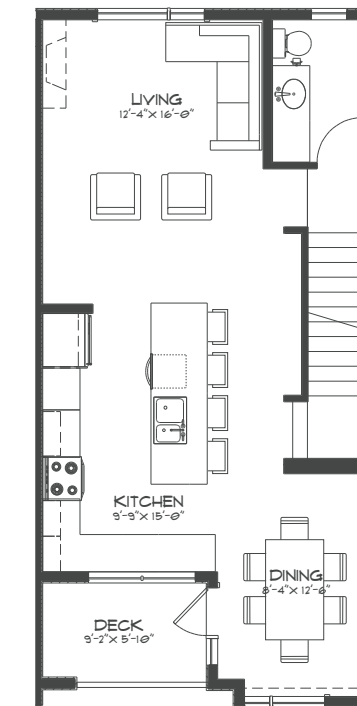
► CENTRE UNIT FLOOR PLAN

84, 80 (reverse plan)

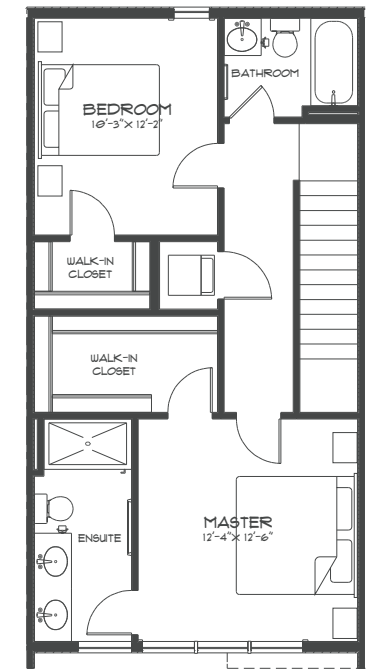
2 bedroom, 2½ bathroom
1662 developed sqft



LOWER LEVEL



MAIN LEVEL



UPPER LEVEL